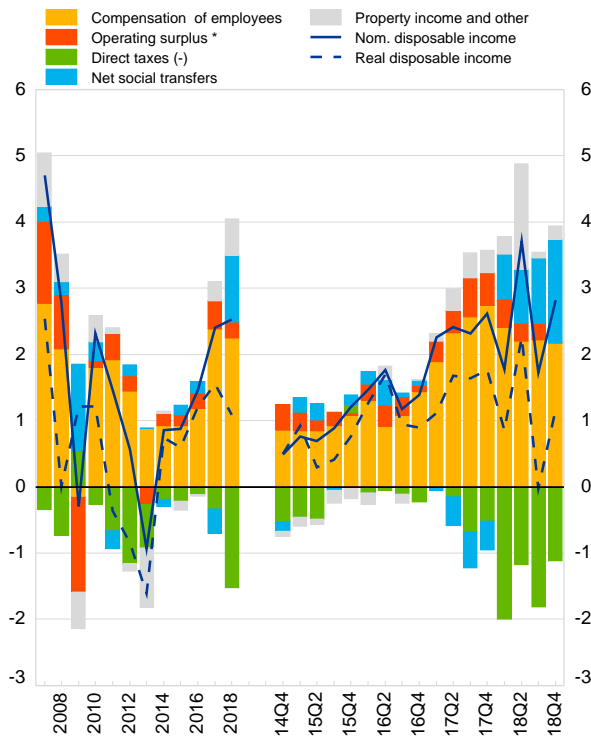


1. Household disposable income and components

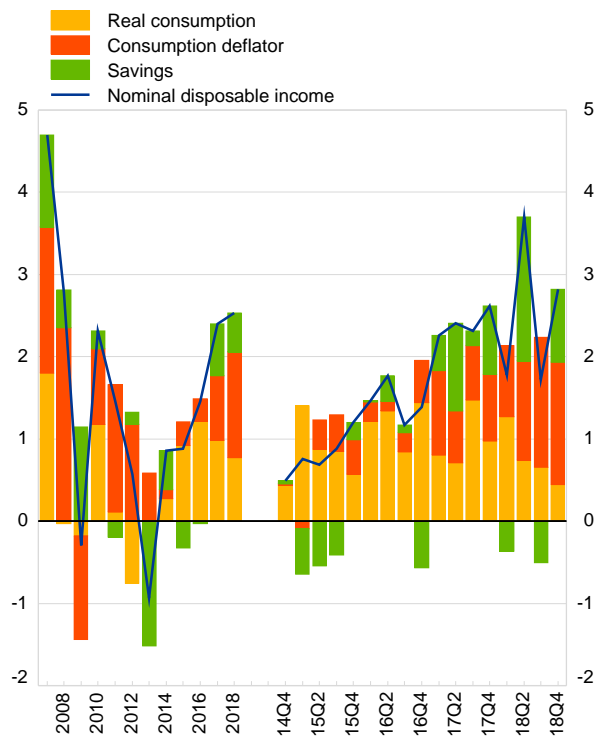
(annual percentage change of real and nominal per capita disposable income and contribution of components)



* Including mixed income.

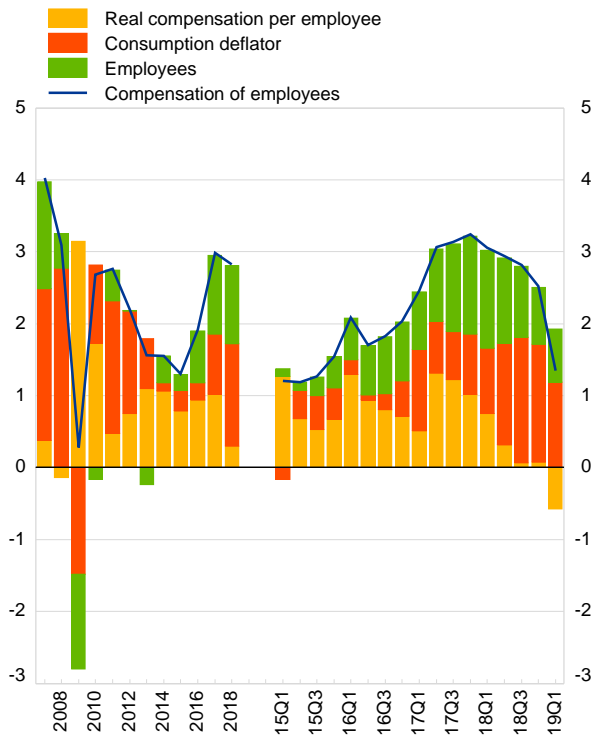
2. Household nominal disposable income and its uses

(annual percentage change of per capita nominal disposable income and breakdown into its uses)



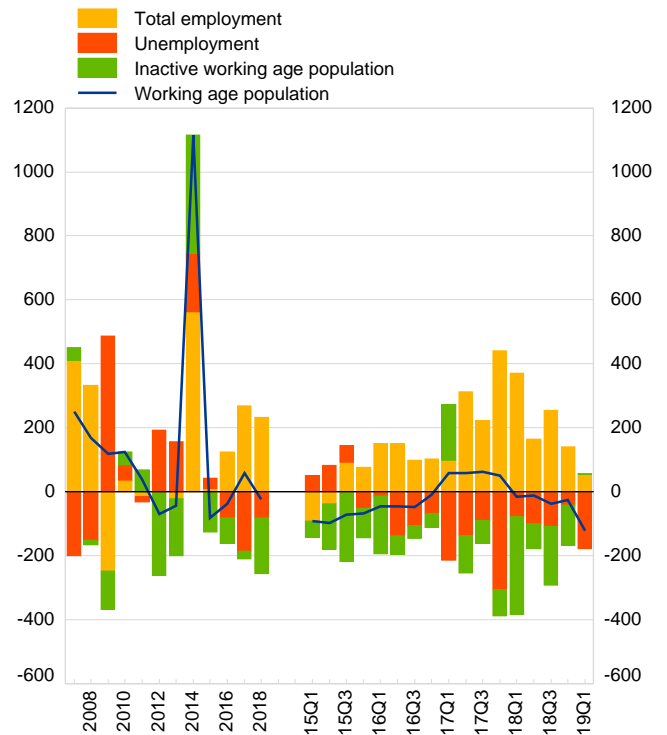
3. Compensation of employees and components

(annual percentage change of compensation of employees and its components)



4. Labour market participation, employment and unemployment *

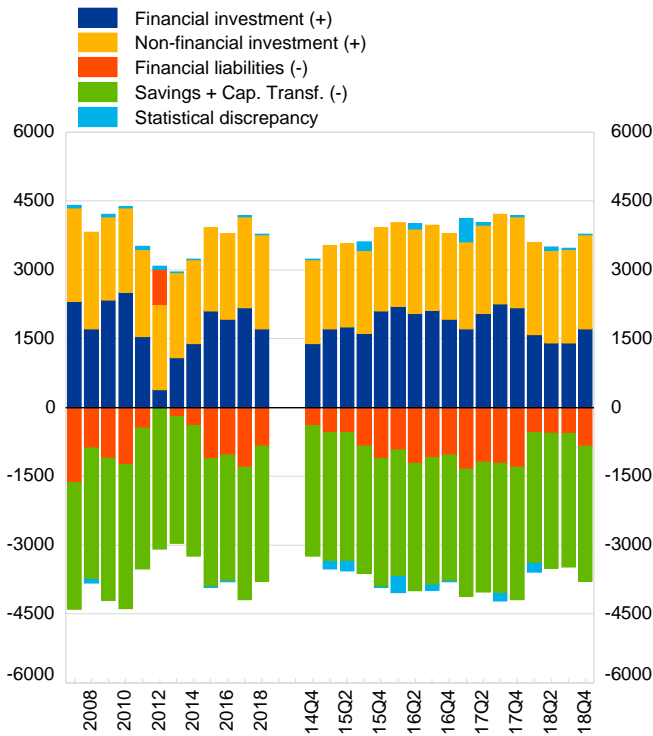
(thousands of people aged 15 to 64, year-to-year difference)



* Labour force survey data for France is affected by a series break in 2014 due to the inclusion of data on overseas departments.

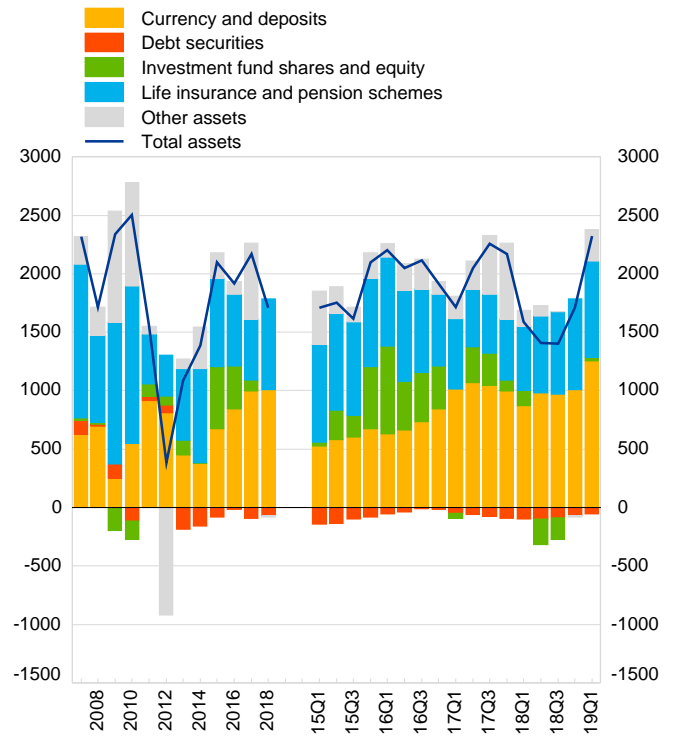
5. Household financing and investment

(EUR per capita, annual transactions and transactions over four quarters)



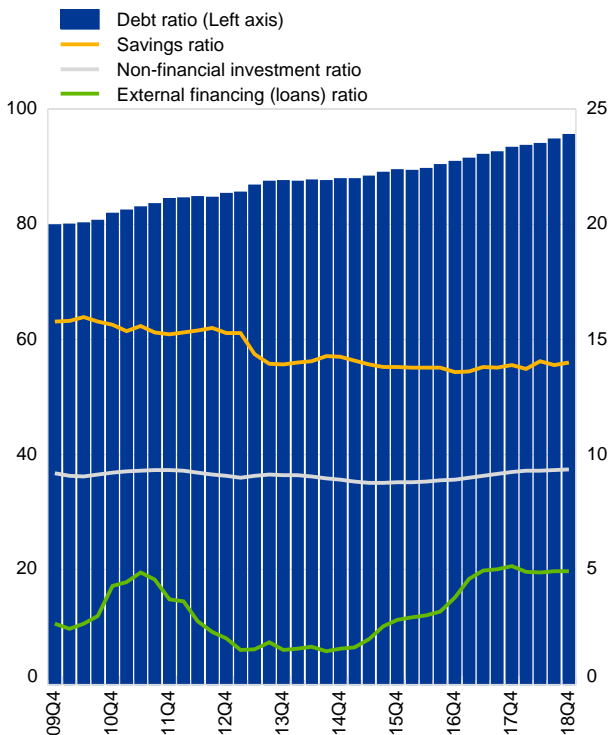
6. Household investments in financial assets and contributions by components

(EUR per capita, annual transactions and transactions over four quarters)



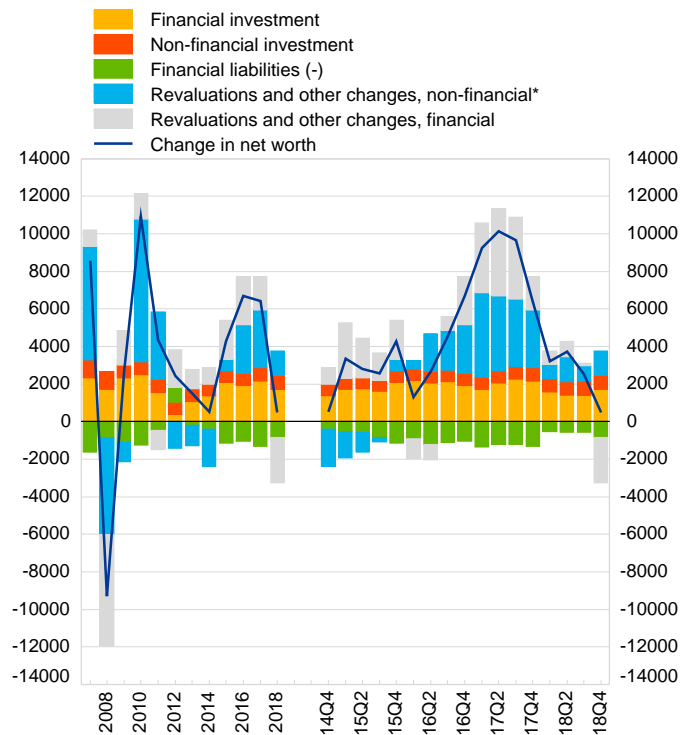
7. Household saving, non-financial investment, external financing and debt

(transactions over four quarters as a percentage of disposable income, except for debt ratio: outstanding debt over disposable income)



8. Changes to household net worth

(EUR per capita, annual flows and flows over four quarters)



* Figures for revaluations and other changes of non-financial investment are ECB estimates

9.A Household key indicators

	2014	2015	2016	2017	2018	2018 Q1	2018 Q2	2018 Q3	2018 Q4	2019 Q1	2018
1.1 Disposable income per capita	<i>Annual percentage change</i>										<i>Index euro area=100</i>
Nominal gross disposable income	0.9	0.9	1.5	2.4	2.5	1.8	3.7	1.7	2.8	.	107.3
Deflator of final consumption	0.1	0.3	0.2	0.8	1.4	0.9	1.4	1.8	1.6	1.2	.
Real gross disposable income	0.7	0.6	1.2	1.5	1.1	0.9	2.3	0.0	1.2	.	109.8
Real final consumption	0.3	1.1	1.5	1.2	1.0	1.2	0.7	0.5	0.5	0.3	105.8
1.2 Saving, investment and debt	<i>Percentage over disposable income</i>										<i>Euro area</i>
Savings ratio	14.3	13.8	13.6	13.9	14.0	13.7	14.1	13.9	14.0	.	11.9
Non-financial investment ratio	8.9	8.8	8.9	9.2	9.3	9.3	9.3	9.3	9.3	.	9.2
External financing (loans) ratio	1.6	2.8	3.8	5.2	4.9	4.9	4.9	4.9	4.9	.	3.0
Debt ratio	87.9	89.5	90.9	93.3	95.5	93.7	94.0	94.8	95.5	.	93.5
1.3 Employment											<i>Euro area</i>
Unemployment rate	10.3	10.4	10.1	9.4	9.1	9.2	9.1	9.0	8.9	8.7	8.2
Total employment, y-o-y%	2.3	0.2	0.6	1.1	0.9	1.5	0.7	0.9	0.5	0.3	1.4

9.B Summary of accounts

	2014	2015	2016	2017	2018	2018 Q1	2018 Q2	2018 Q3	2018 Q4	2019 Q1	2018
2.1 Decomposition of gross disposable income	<i>Contribution to annual percentage change</i>										<i>Euro area</i>
Compensation of employees (+)	0.9	0.9	1.2	2.4	2.2	2.4	2.2	2.2	2.2	.	2.9
Gross operating surplus (+)	0.2	0.2	0.2	0.4	0.2	0.4	0.3	0.3	0.0	.	0.5
Net social transfers (+)	-0.1	0.1	0.2	-0.4	1.0	0.7	0.8	1.0	1.6	.	-0.1
Property income/other transf.(+)	0.0	-0.1	0.0	0.3	0.6	0.3	1.6	0.1	0.2	.	0.3
Direct taxes (-)	-0.2	-0.2	-0.1	-0.3	-1.5	-2.0	-1.2	-1.8	-1.1	.	-0.8
Gross disposable income	0.9	0.9	1.5	2.4	2.5	1.8	3.7	1.7	2.8	.	2.9
2.2 Saving, investment and net borrowing flows	<i>Euro per capita, four quarter sum</i>										<i>Euro area</i>
Saving, gross ⁽¹⁾	2,848.1	2,782.0	2,746.4	2,883.0	2,931.8	2,855.7	2,944.4	2,900.5	2,931.8	.	2,496.3
Non-financial investment, gross	1,827.5	1,820.5	1,872.3	1,985.0	2,061.0	2,006.7	2,026.9	2,045.2	2,061.0	.	1,921.3
Net lending(+)/net borrowing(-)	1,020.6	961.5	874.1	898.0	870.8	848.9	917.4	855.2	870.8	.	575.0
2.3 Financial investment	<i>Euro per capita, four quarter sum</i>										<i>Euro area</i>
Currency and deposits	376.8	676.4	842.5	995.7	1,005.6	869.6	983.0	972.1	1,005.6	1,254.7	934.3
Debt securities	-157.1	-83.0	-17.1	-93.1	-70.0	-97.7	-100.1	-85.7	-70.0	-54.8	-56.4
Investment funds and shares	6.2	528.1	370.8	92.2	-0.7	132.3	-219.9	-189.9	-0.7	32.5	6.8
Life insurance and pension schemes	807.4	756.4	609.1	523.3	783.2	550.1	652.6	703.8	783.2	822.0	529.3
Other assets	353.0	220.7	114.1	650.7	-10.6	133.3	89.8	0.0	-10.6	268.2	-28.9
Total assets	1,386.3	2,098.5	1,919.4	2,168.8	1,707.6	1,587.5	1,405.4	1,400.4	1,707.6	2,322.7	1,385.0
2.4 Financial liabilities	<i>Euro per capita, four quarter sum</i>										<i>Euro area</i>
Short-term loans	-19.6	-23.5	-13.2	-10.4	6.8	-11.8	4.4	-3.6	6.8	-18.2	13.7
Long-term loans	341.3	604.1	806.4	1,120.6	1,078.5	1,069.9	1,056.7	1,085.1	1,078.5	1,123.9	601.0
Other liabilities	66.3	545.6	245.2	189.4	-239.2	-515.9	-502.8	-508.0	-239.2	82.9	159.7
Total liabilities	388.0	1,126.2	1,038.4	1,299.6	846.1	542.2	558.4	573.5	846.1	1,188.6	774.5

(1) Including net capital transfers.