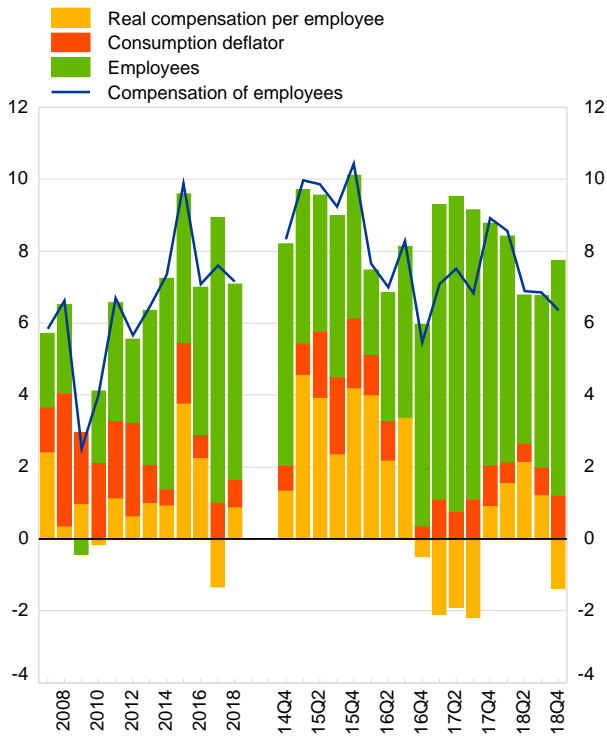


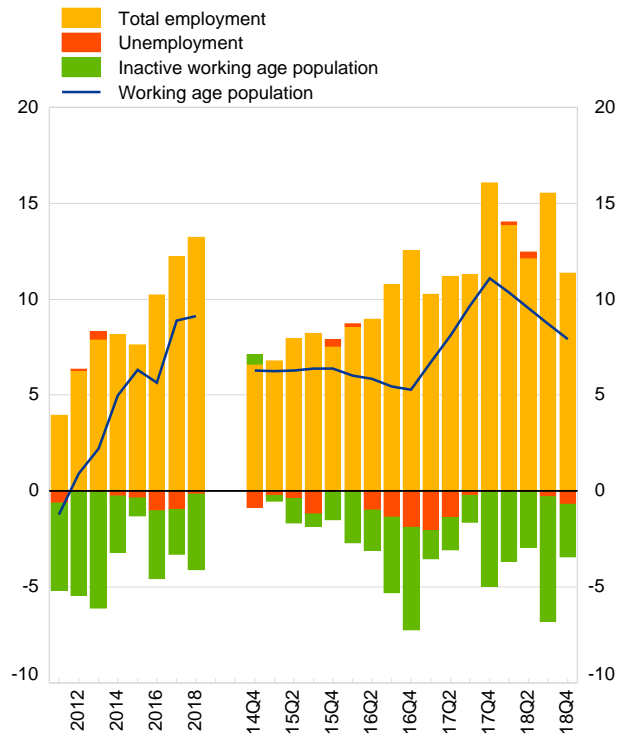
3. Compensation of employees and components

(annual percentage change of compensation of employees and its components)



4. Labour market participation, employment and unemployment *

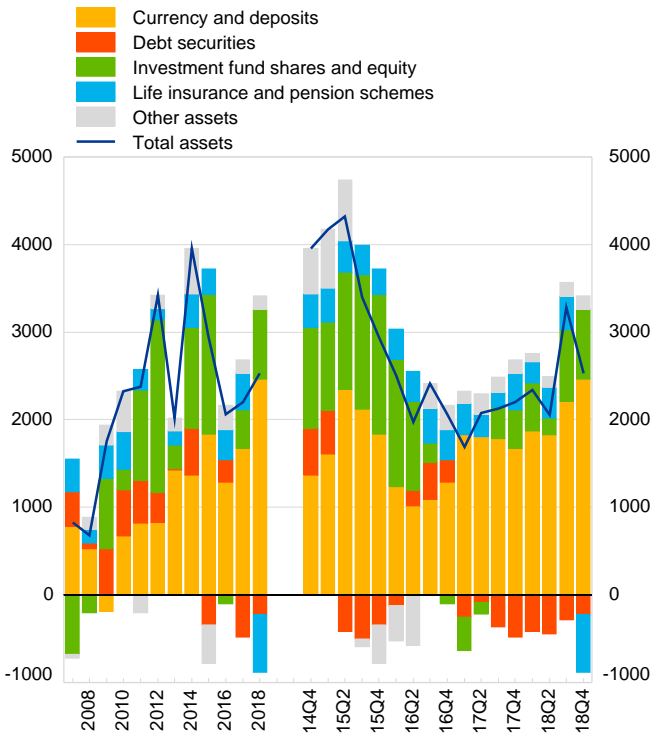
(thousands of people aged 15 to 64, year-to-year difference)



* The figures for year-to-year changes amounting to fewer than 3000 persons (for quarterly data) and 800 persons (for annual data) may not reflect actual changes in levels due to underrepresentation.

6. Household investments in financial assets and contributions by components

(EUR per capita, annual transactions and transactions over four quarters)



Note: charts 1,2,5,7 and 8 are not available for Malta

9.A Household key indicators

	2013	2014	2015	2016	2017	2017
1.1 Disposable income per capita	<i>Annual percentage change</i>					<i>Index euro area=100</i>
Nominal gross disposable income						
Deflator of final consumption	1.1	0.4	1.7	0.6	1.0	
Real gross disposable income						
Real final consumption						
1.2 Saving, investment and debt	<i>Percentage over disposable income</i>					<i>Euro area</i>
Savings ratio						11.8
Non-financial investment ratio						8.8
External financing (loans) ratio						2.7
Debt ratio						94.0
1.3 Employment						<i>Euro area</i>
Unemployment rate	6.1	5.7	5.4	4.7	4.0	9.1
Total employment, y-o-y%	4.9	5.0	4.0	5.0	6.0	1.5

9.B Summary of accounts

	2013	2014	2015	2016	2017	2017
2.1 Decomposition of gross disposable income	<i>Contribution to annual percentage change</i>					<i>Euro area</i>
Compensation of employees (+)						2.6
Gross operating surplus (+)						0.6
Net social transfers (+)						-0.3
Property income/other transf.(+)						0.4
Direct taxes (-)						-0.7
Gross disposable income						2.6
2.2 Saving, investment and net borrowing flows	<i>Euro per capita, four quarter sum</i>					<i>Euro area</i>
Saving, gross ⁽¹⁾						2,400.7
Non-financial investment, gross						1,785.9
Net lending(+)/net borrowing(-)						614.8
2.3 Financial investment	<i>Euro per capita, four quarter sum</i>					<i>Euro area</i>
Currency and deposits	1,424.6	1,365.3	1,832.9	1,284.7	1,672.6	749.2
Debt securities	13.5	533.0	-339.6	260.0	-481.1	-261.0
Investment funds and shares	272.5	1,154.9	1,595.4	-98.2	443.2	359.4
Life insurance and pension schemes	163.7	382.2	292.0	339.0	411.8	531.3
Other assets	140.3	519.5	-438.3	278.5	153.5	5.3
Total assets	2,014.6	3,954.8	2,942.5	2,063.9	2,200.0	1,384.2
2.4 Financial liabilities	<i>Euro per capita, four quarter sum</i>					<i>Euro area</i>
Short-term loans	-13.7	-108.1	141.4	-17.3	32.5	-10.0
Long-term loans	475.8	403.5	489.2	575.2	632.2	557.2
Other liabilities	371.5	-136.9	-180.6	306.8	325.2	146.9
Total liabilities	833.7	158.5	450.0	864.7	989.9	694.1

(1) Including net capital transfers.